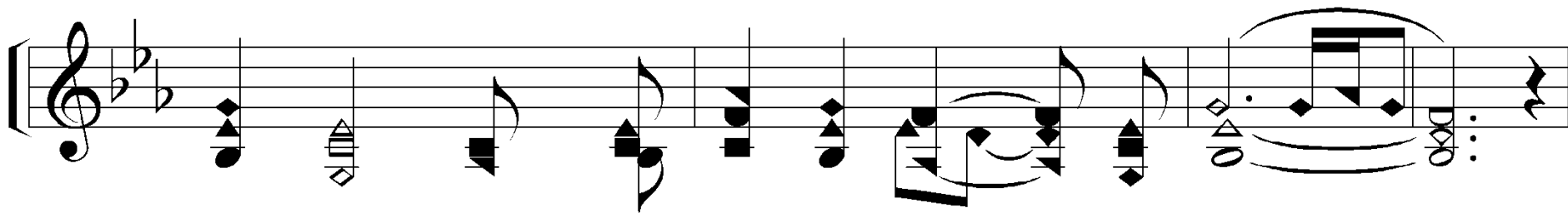


1 – A Shield About Me



Thou O Lord art a shield a-bout me. You're my



glo - ry, You're the lift - er of my head.

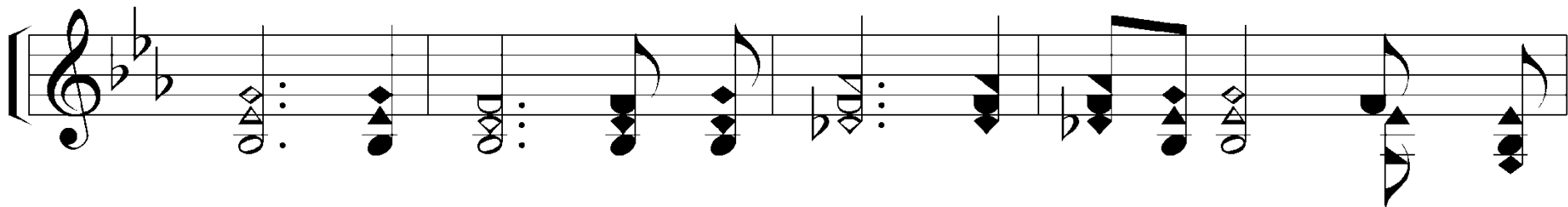
Words & Music: Donn Thomas & Charles Williams

Copyright © 1991 by Spoons Music (a div. of Word Music, Inc.), Word Music, Inc.

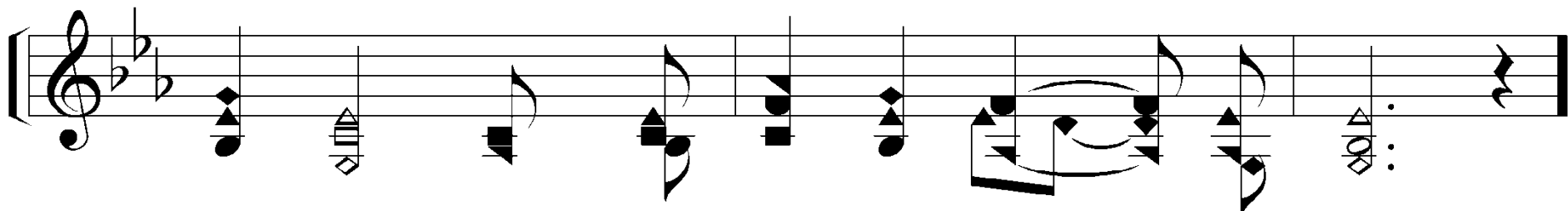
All Rights Reserved. Used By Permission.

© 2003 The Paperless Hymnal™

1 – A Shield About Me

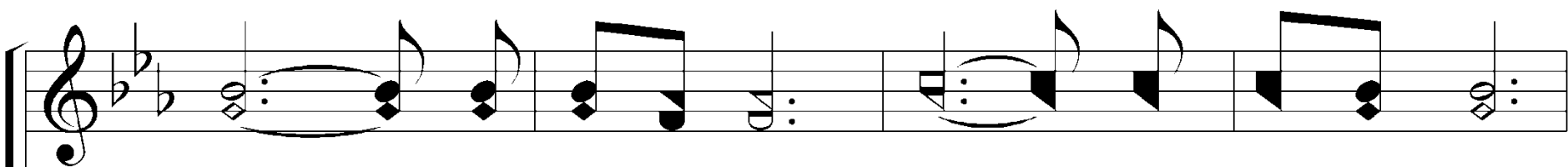


Thou O Lord art a shield a - bout me. You're my



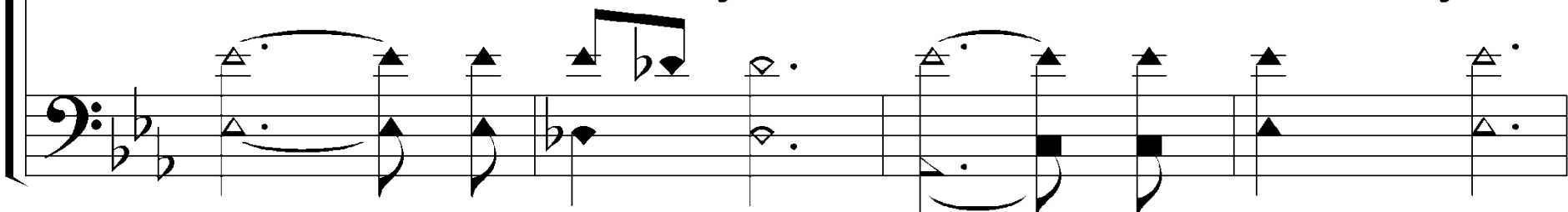
glo - ry, You're the lift - er of my head.

1 – A Shield About Me

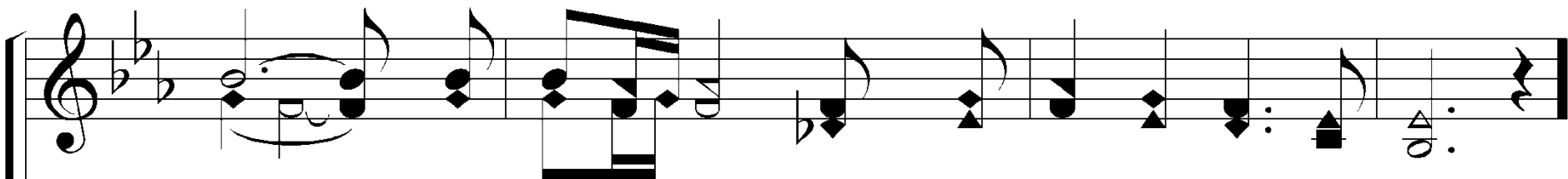


Musical notation for the first system, treble clef. The key signature has three flats (B-flat, E-flat, A-flat). The melody consists of a half note G4, a quarter note A4, a quarter note B4, a quarter note C5, a quarter note B4, a quarter note A4, a quarter note G4, and a quarter note F4. There are repeat signs at the beginning and end of the phrase.

Hal - le - lu - jah, Hal - le - lu - jah,



Musical notation for the first system, bass clef. The bass line consists of a half note G3, a quarter note A3, a quarter note B3, a quarter note C4, a quarter note B3, a quarter note A3, a quarter note G3, and a quarter note F3. There are repeat signs at the beginning and end of the phrase.



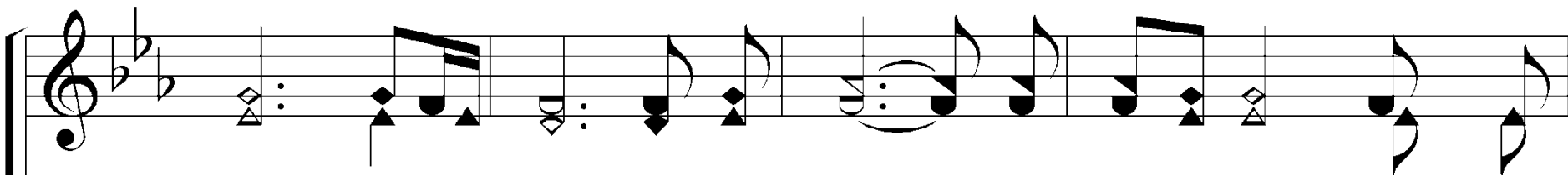
Musical notation for the second system, treble clef. The melody continues with a half note G4, a quarter note A4, a quarter note B4, a quarter note C5, a quarter note B4, a quarter note A4, a quarter note G4, a quarter note F4, a quarter note E4, a quarter note D4, a quarter note C4, a quarter note B3, a quarter note A3, a quarter note G3, and a quarter note F3. There are repeat signs at the beginning and end of the phrase.

Hal - le - lu - jah, You're the lift - er of my head.



Musical notation for the second system, bass clef. The bass line continues with a half note G3, a quarter note A3, a quarter note B3, a quarter note C4, a quarter note B3, a quarter note A3, a quarter note G3, a quarter note F3, a quarter note E3, a quarter note D3, a quarter note C3, a quarter note B2, a quarter note A2, a quarter note G2, and a quarter note F2. There are repeat signs at the beginning and end of the phrase.

1 – A Shield About Me

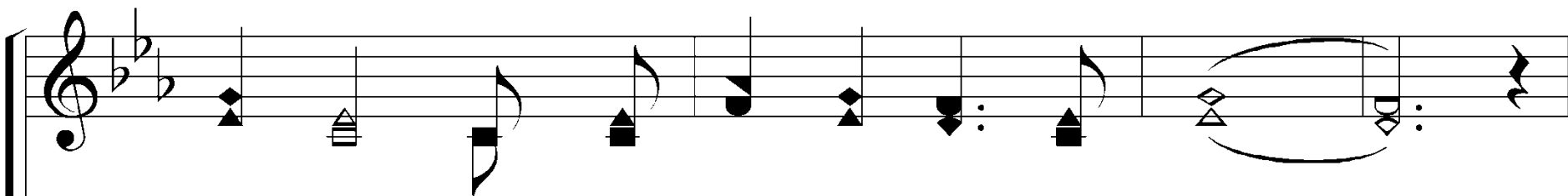


Musical notation for the first system, treble clef. The key signature has three flats (B-flat, E-flat, A-flat). The melody consists of eighth and quarter notes, with some notes beamed together. There are repeat signs at the beginning and end of the phrase.

Thou O Lord art a shield a - bout me. You're my

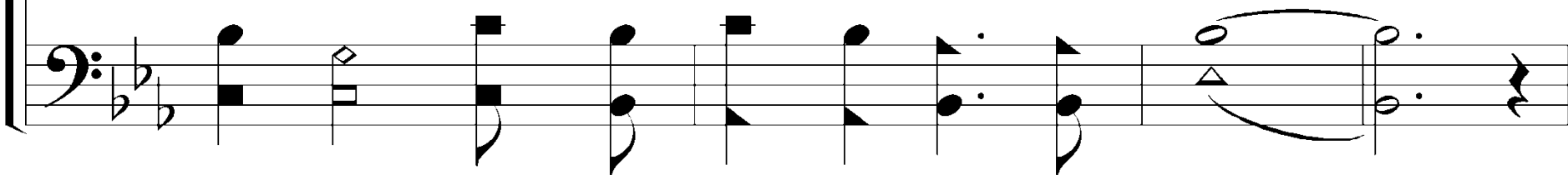


Musical notation for the first system, bass clef. The bass line consists of quarter and eighth notes, providing a steady accompaniment to the melody.



Musical notation for the second system, treble clef. The melody continues with quarter and eighth notes, ending with a long note that spans across the system boundary.

glo - ry, You're the lift - er of my head.



Musical notation for the second system, bass clef. The bass line continues with quarter and eighth notes, ending with a long note that spans across the system boundary.

1 – A Shield About Me

Musical notation for the first system, treble clef. The melody consists of two measures. The first measure contains a half note G4, a half note A4, and a half note B4, all beamed together. The second measure contains a half note C5, a half note B4, and a half note A4, all beamed together. The key signature has two flats (Bb and Eb).

Hal - le - lu - jah, Hal - le - lu - jah,

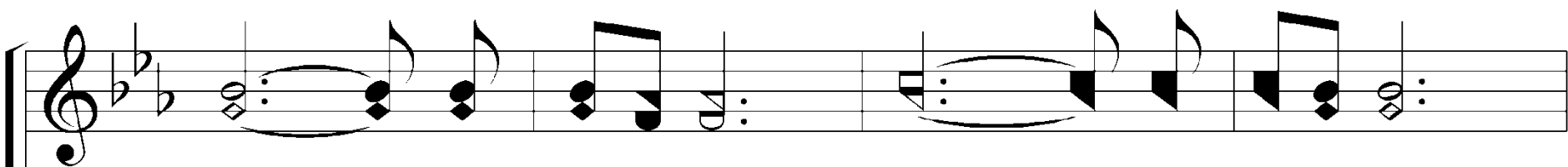
Musical notation for the first system, bass clef. The bass line consists of two measures. The first measure contains a half note G3, a half note A3, and a half note B3, all beamed together. The second measure contains a half note C4, a half note B3, and a half note A3, all beamed together. The key signature has two flats (Bb and Eb).

Musical notation for the second system, treble clef. The melody consists of two measures. The first measure contains a half note G4, a half note A4, and a half note B4, all beamed together. The second measure contains a half note C5, a half note B4, and a half note A4, all beamed together. The key signature has two flats (Bb and Eb).

Hal - le - lu - jah, You're the lift - er of my head.

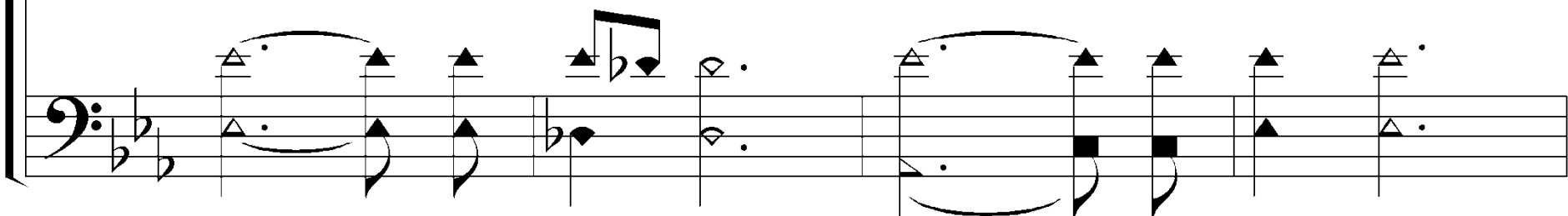
Musical notation for the second system, bass clef. The bass line consists of two measures. The first measure contains a half note G3, a half note A3, and a half note B3, all beamed together. The second measure contains a half note C4, a half note B3, and a half note A3, all beamed together. The key signature has two flats (Bb and Eb).

1 – A Shield About Me

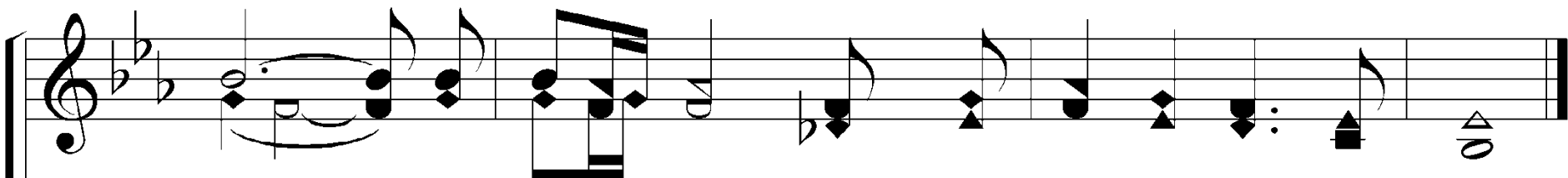


Musical notation for the first system, treble clef. The key signature has two flats (B-flat and E-flat). The melody consists of two phrases, each starting with a half note followed by a quarter note, then a quarter note, and ending with a quarter note and a half note. The first phrase is: G4 (half), A4 (quarter), B4 (quarter), A4 (quarter), G4 (half). The second phrase is: G4 (half), A4 (quarter), B4 (quarter), A4 (quarter), G4 (half).

Hal - le - lu - jah, Hal - le - lu - jah,

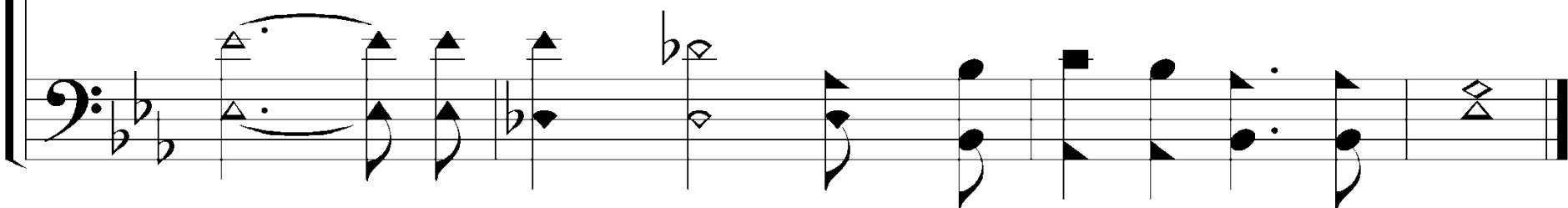


Musical notation for the first system, bass clef. The accompaniment consists of two phrases, each starting with a half note followed by a quarter note, then a quarter note, and ending with a quarter note and a half note. The first phrase is: G3 (half), A3 (quarter), B3 (quarter), A3 (quarter), G3 (half). The second phrase is: G3 (half), A3 (quarter), B3 (quarter), A3 (quarter), G3 (half).



Musical notation for the second system, treble clef. The melody consists of two phrases. The first phrase is: G4 (half), A4 (quarter), B4 (quarter), A4 (quarter), G4 (half). The second phrase is: G4 (half), A4 (quarter), B4 (quarter), A4 (quarter), G4 (half).

Hal - le - lu - jah, You're the lift - er of my head.



Musical notation for the second system, bass clef. The accompaniment consists of two phrases. The first phrase is: G3 (half), A3 (quarter), B3 (quarter), A3 (quarter), G3 (half). The second phrase is: G3 (half), A3 (quarter), B3 (quarter), A3 (quarter), G3 (half).



Instruct One Another

Romans 15:14-16





Instruct One Another

Romans 15:14-16

17 Iron sharpens iron, and
one man sharpens another.



**Instruct One
Another**

Proverbs 27:17

14 I myself am satisfied about you, my brothers, that you yourselves are full of goodness, filled with all knowledge and able to instruct one another.

15 But on some points I have written to you very boldly by way of reminder, because of the grace given me by God **16** to be a minister of Christ Jesus to the Gentiles in the priestly service of the gospel of God, so that the offering of the Gentiles may be acceptable, sanctified by the Holy Spirit.



**Instruct One
Another**

Romans 15:14-16



**They were
qualified to
instruct each other.**



**They were
called to
instruct each other.**



CovenantEyes[®]



**They were
called to
instruct each other.**



Instruct One Another

Romans 15:14-16